



Why Metabolex Can File More Patents Using X1® Enterprise Search Suite

“If a search solution didn’t work with our customized security framework, that was a deal-killer for us. X1 is easy to deploy, easy to manage, and didn’t require us to change anything about the security scheme we had in place.”

– David Shivak, Computational Biologist/Information Technology Manager

The Client

Based in Hayward, California, Metabolex is a privately held biotechnology company dedicated to the discovery and development of novel therapeutics to treat diabetes and related metabolic disorders. The Company’s clinical program is focused on developing next-generation insulin sensitizers that lower blood glucose without the serious safety and tolerability issues associated with currently marketed products.

The Challenge

It was becoming clear to the Company that to continue its discovery and development of new patentable therapeutics, it would need a faster, more efficient way to search its vast archive, which includes data representing 10 years of research by Metabolex scientists, as well as a large repository of electronic lab results, journal articles and PDFs. With 200 GB of data to index, Metabolex needed a product designed for enterprise scale and scope.

David Shivak, Metabolex IT Manager, started looking at solutions from enterprise search vendors. His requirements were:

The ability to use an existing customized security framework.

“Out-of-the-box” Access Control List support. Shivak found this feature was not always provided by vendors, who assumed their products were used to search Public Folders only.

Small index size. The search solution should index file names and contents efficiently, require a minimum of additional storage, and have a minimal impact on backup time and costs.

Ability to point to multiple network shares. Shivak wanted all the departments within the Company to be able to access the archived research data.

Easy to manage and cost-effective. Shivak wanted a solution that could accommodate the growing Metabolex archive but would not charge by the number of pages searched.

Customer

Metabolex, Inc.
www.metabolex.com

Business Challenge

Rapid retrieval of files from 10 years of research (200 GB of mostly unstructured data) consisting of scientific journals, electronic lab results and PDFs

X1 Solutions

- X1 Enterprise Search Suite

Benefits & Results

- Small footprint of X1 index
- “Out-of-the-box” ACL support with no need to change Metabolex’s customized security scheme
- Able to point to multiple network shares
- Simple management tools to cover all types of data

X1 Technologies, LLC
130 West Union Street
Pasadena, CA 91103

866-918-3241 tel
626 535-2701 fax

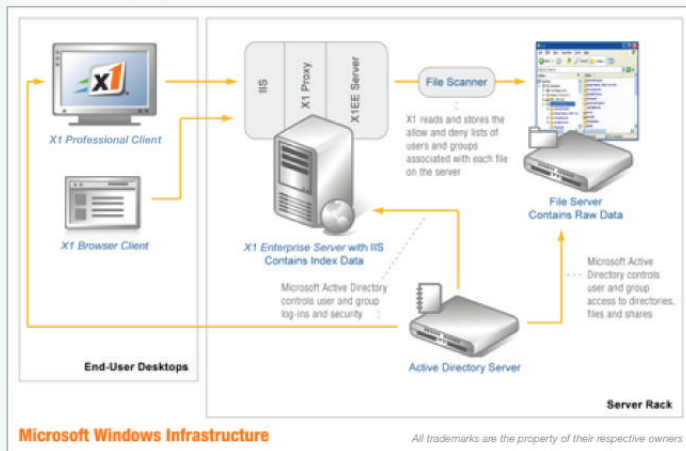
www.X1.com



Metabolex Chooses X1

“We chose X1 because it offered several benefits of key importance to us,” said Shivak. “As a Silicon Valley biotech start-up, we had stringent security requirements to safeguard our intellectual property. We had put a customized security solution in place, and we wanted to find search software that would integrate easily with that customized solution.”

X1 Enterprise Search Suite meets these requirements because it is designed to integrate easily with a corporate Microsoft Windows environment, using Windows authentication procedures to provide an additional level of security. Within this environment, Enterprise Search Suite takes advantage of the security facilities offered by the Microsoft Windows file servers, Active Directory infrastructure and the IIS Web Application server platform. The following diagram provides an overview of how X1 Enterprise Search Suite leverages Microsoft Windows security facilities.



To determine whether an end-user is authorized to receive a search result, X1 combines several layers of Microsoft security with the permissions set up when installing X1, verifying the credentials of the user against the combined security rules of all layers.

Besides meeting Metabolex’s security needs, X1 also met the Company’s other requirements:

Small index size. One of the things Shivak looked at closely was how much storage space a vendor’s index would need after indexing Metabolex’s 200 GB of data. “Even a 10 percent difference in index size can represent an important savings in the time and money spent on backup each day,” Shivak said.

Ability to point to multiple network shares. Users from different Metabolex departments find archived data quickly and easily using X1.

Easy to manage. Shivak found that the centralized configuration available through X1 Enterprise Search Suite’s Deployment Manager and the centralized administration provided by Server Manager made the product easy to deploy and easy to manage once deployed. For example, since he knew his users would be searching an archive on a network share-based file storage device, Shivak was able to use Deployment Manager to exclude certain items from search results.

Cost-effective. Shivak found X1 to be a cost-effective solution. The small index size helps control the time and money spent on backup. Tests show that the time required to index is significantly smaller with X1, which also helps keep costs down. (In one case, X1 took two hours to index the same data it took another vendor’s product more than 14 hours to index. And this despite the fact that X1 indexed a greater variety of file types.) In addition, X1 Technologies does not charge the customer for the number of pages indexed, as many other vendors do. This means there is a predictable cost for the search solution going forward, even if the number of files in the research archive grows significantly.

The X1 Results

“By making it easier to locate and use information, X1 has made our research and development operation more efficient,” Shivak said. “In a field like biotech, that can mean a real advantage in time to market. We’re also getting more benefit and use from the 10 years of research in our archive. For example, X1 has proved invaluable for finding lab data, checking existing patents and establishing a data workflow history.”

Since Metabolex’s archive is an invaluable source of data and ideas for ongoing research, Shivak was pleased to find that X1 could index even the older documents it contained, which had been turned into PDF files by a process involving OCR (optical character recognition). “We found X1’s substring search to be fairly tolerant of OCR mistakes,” said Shivak. “Even the best OCR misreads some characters, but because X1 is forgiving of spelling errors, we can find these documents, even if the scientific term being searched on is misspelled in a document. This is very helpful for scientists using 15-letter scientific terms as their search string.” X1’s ability to find the requested files even when OCR had misread some scientific terms means users can productively use data they otherwise might never have found.

“Another reason X1 Enterprise Search Suite is an especially strong solution for us is that our archive is on a NetApp® Filer from Network Appliance,” added Shivak. “Without a local operating system, we couldn’t use Windows indexing without a sizeable amount of extra work. But X1 Enterprise Search Suite supports the NetApp.”

Shivak reports that his users are very satisfied with their X1 Enterprise Search Suite installation. The Company plans to use X1 Enterprise Search Suite with Microsoft’s Sharepoint collaboration platform.

About X1 Technologies, Inc.

X1 Technologies, the innovator in enterprise search solutions was founded in 2003 with the vision of providing a single user interface capable of previewing and acting upon data anywhere in the enterprise. X1’s patented search technology scales from a single server to tens of thousands of desktops. Innovations pioneered by X1 include find-as-you-type searching along with unified, actionable search. X1 is a technology partner with leading companies such as Microsoft, Oracle and Symantec. Headquartered in Pasadena California, X1 is an operating company of Idealab. For more information, visit <http://www.x1.com> or call 626-229-3050.